



Implementing the Minnesota Oral Health Surveillance System (MNOHSS)

Tuesday, April 29, 2014
National Oral Health Conference
Fort Worth, Texas

Genelle R.S. Lamont, MPH
MNOHSS Coordinator

Funding provided by:



DELTA DENTAL OF MINNESOTA FOUNDATION



Oral Health Program

Overview

1. Background
2. Process
3. Tips & Lessons Learned

Background

Minnesota Oral Health Surveillance System (MNOHSS)

“MINNOWS”

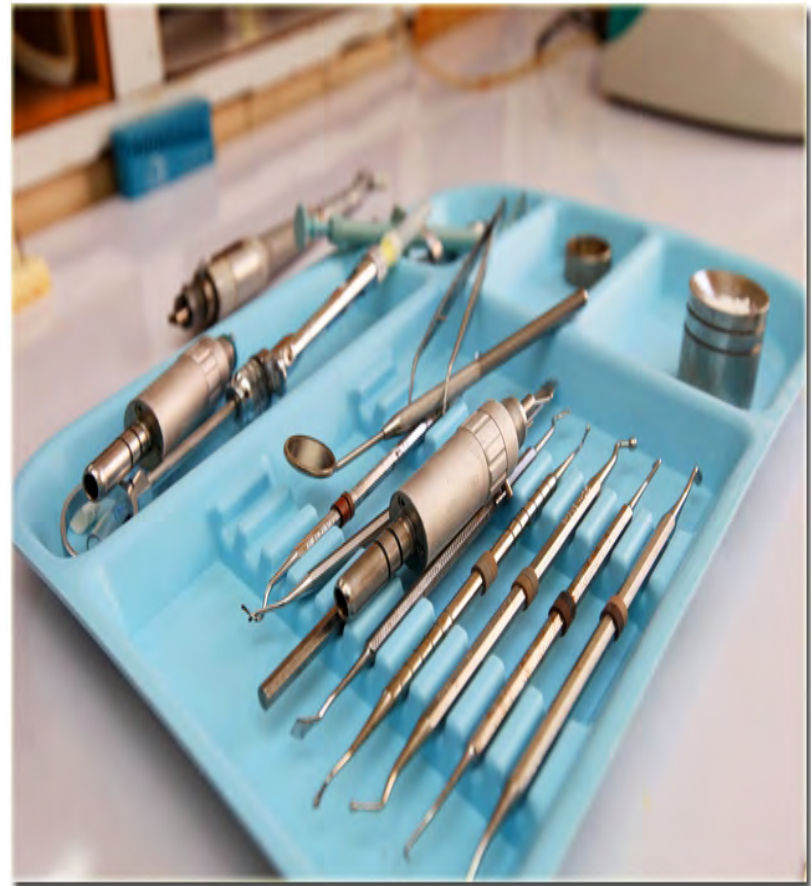


**GOAL: One-Stop Source for Dental Data so You Don't
Have to Go Fishing!**

Another Tool for Your Toolkit

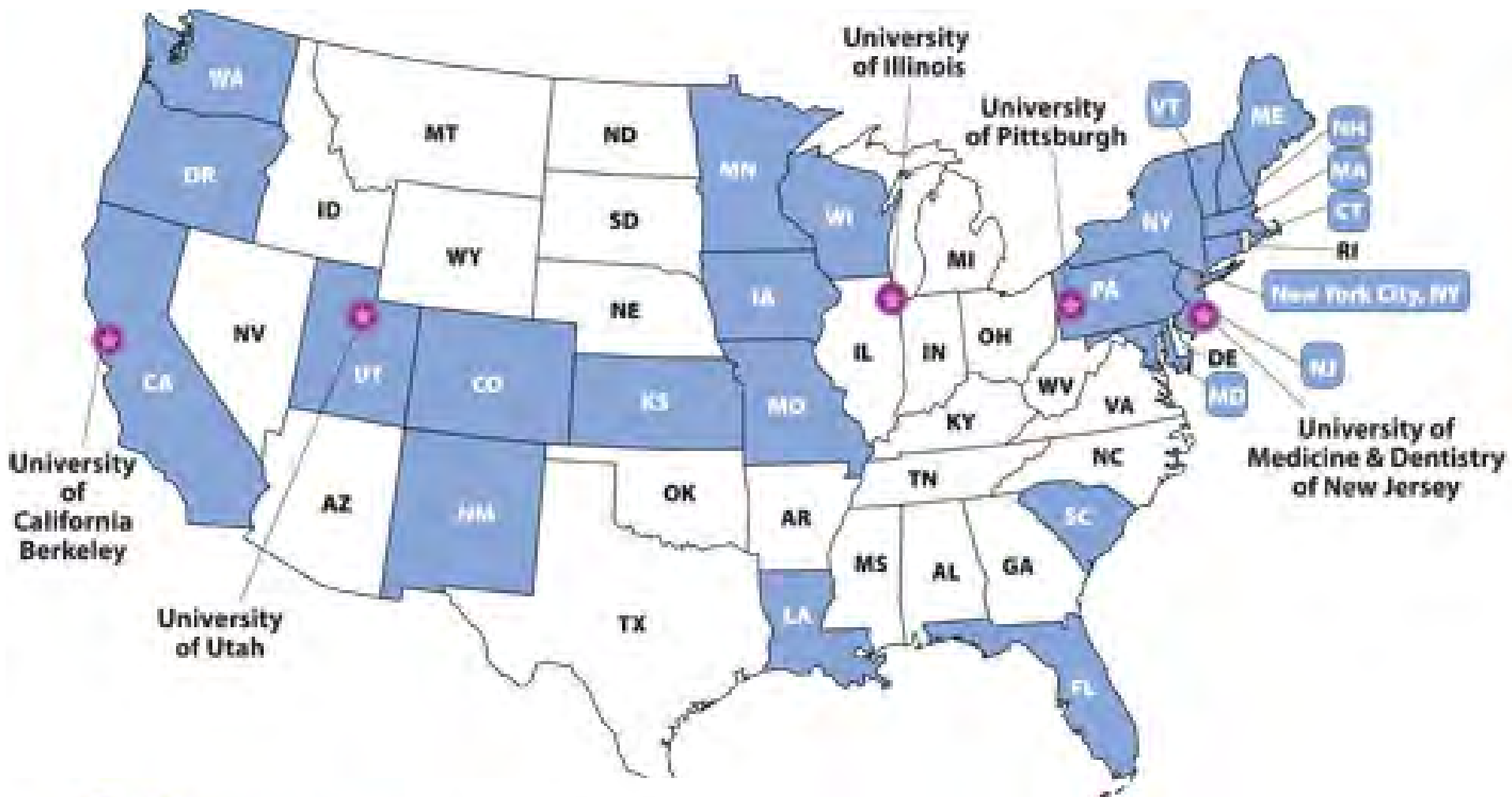
MNOHSS is a data tracking system and decision-making tool that allows for the continuous, systematic collection, analysis and interpretation of dental-health related data used for:

- Planning
- Implementation
- Evaluation



Environmental Public Health Tracking Network (EPHTN)

- **Funded by CDC**
- **Purpose: provide nationally-consistent data & measures on environmental indicators and public health outcomes**
- **States share data via online, public-access portal**
- **23 states, NYC, and 5 academic partners**





Select a topic below:

Share this Email updates

Topics A-Z

Topics by category

Air Quality

Asthma

Birth Defects

Cancer

Carbon Monoxide Poisoning

Chemicals in People: Biomonitoring

Childhood Immunizations

Childhood Lead Poisoning

Chronic Obstructive Pulmonary Disease

Drinking Water Quality

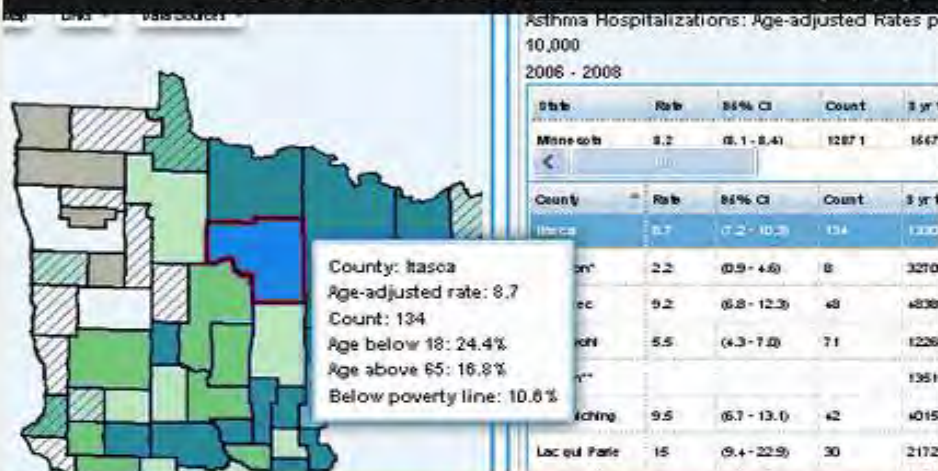
Environmental Tobacco Smoke

Heart Attacks

Heat-Related Illness

Obesity

View interactive maps!



Learn More:

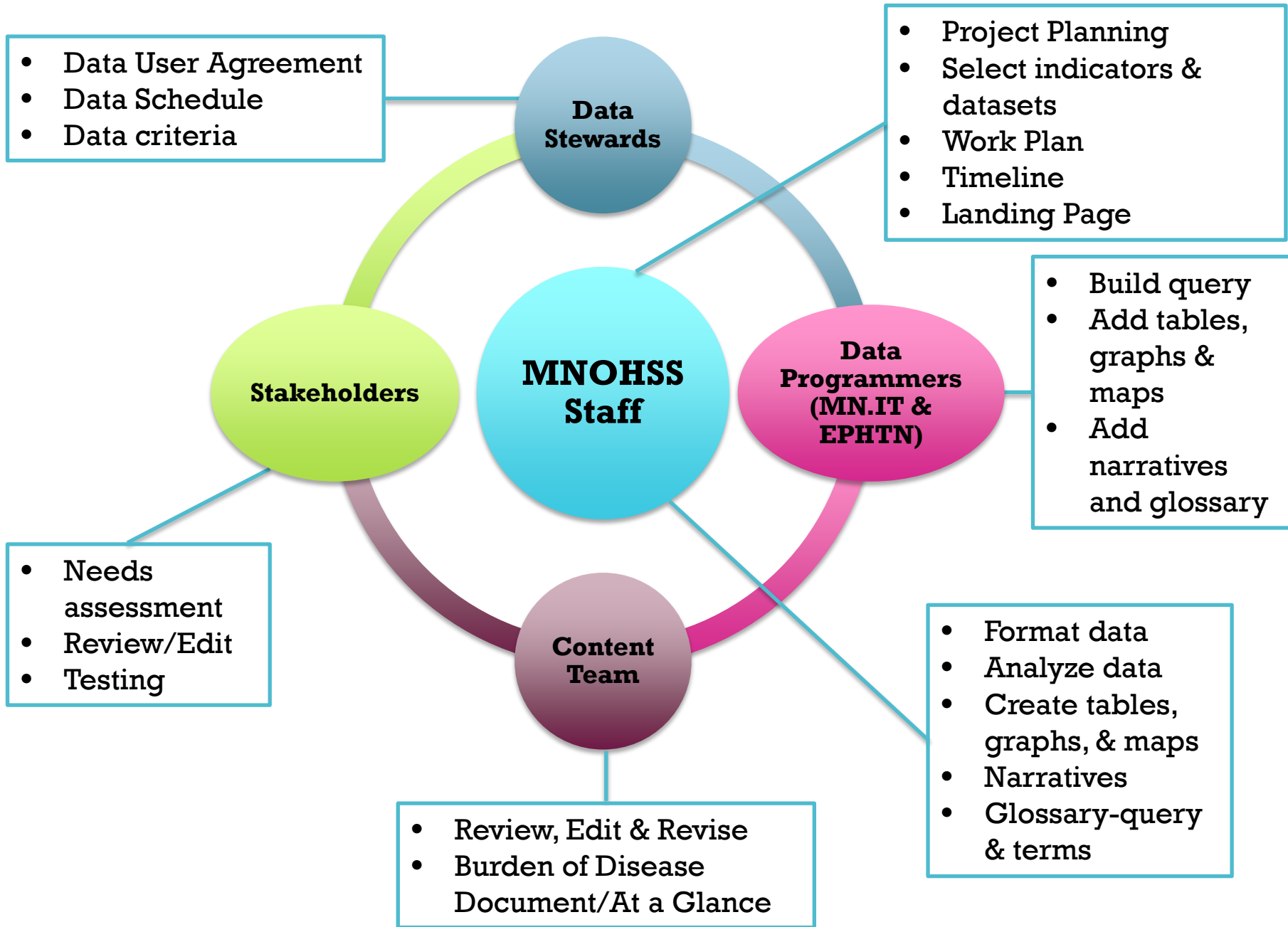
- ▶ How-To Guide
- ▶ FAQs
- ▶ News & Updates
- ▶ Glossary
- ▶ Data Resources
- ▶ Contact Us

Related Sites:

- ▶ Tracking in Action
- ▶ MDH Data & Statistics
- ▶ MN Environmental Public Health Tracking
- ▶ DATA.gov

Website: https://apps.health.state.mn.us/mndata/

Iterative Process

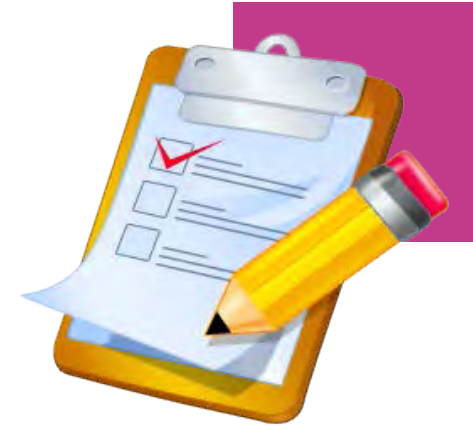


Tips & Lessons Learned

- ✓ **Keep updated with best practices (e.g. oral health surveillance, oral health literacy, GIS mapping, quality improvement, etc...)**
- ✓ **Create a detailed, comprehensive team work plan**
- ✓ **Develop realistic project scope and milestones**
- ✓ **Develop a detailed data indicator plan**



- Know your data inside and out
- Establish good relationships with current and potential data stewards
- Establish clear communication channels with your project team



- Know your data inside and out
- Establish good relationships with current and potential data stewards
- Establish clear communication channels with your project team



Currently Under Development Stay Tuned...



- Anticipated launch date January 2015
- Data will include:
 - Minnesota Department of Human Services healthcare program claims data
 - Behavioral Risk Factor Surveillance System
 - Basic Screening Survey
 - Workforce & workforce shortage data
 - Water fluoridation data
 - Minnesota Department of Education (Free & Reduced Price Lunch)
- Maintenance and additional data

Acknowledgements

- **Delta Dental Foundation of Minnesota**
 - Susan Hammel, Executive Director
 - Dana L. Jensen, Program Officer & Senior Grants Manager
 - Sharon Oswald, Program Manager
- **Minnesota Environmental Health Tracking Network**
 - Chuck Stroebel, Program Manager
 - Matthew Montesano, Data Access Portal Coordinator
- **MN.IT**
 - Dave Stewart, Data Programmer
 - Mary Ruth Harsha, Project Manager
- **MDH Oral Health Program**
 - Merry Jo Thoele, Dental Director
 - Charity Kreider, Program Coordinator
 - Bilquis Khan, Evaluator
 - Clare Larkin, Prevention Coordinator
 - Barbara Hann, Data Coordinator
 - Jon Roesler, Epidemiologist
 - Sahiti Bhaskara, Student Paraprofessional
- **Minnesota Oral Health Coalition (MOHC)**
- **Minnesota Oral Health Surveillance Advisory Group (MOHSAG)**
- **Minnesota Health Literacy Partnership (MNHLP)**



Genelle Lamont, MPH

MNOHSS Coordinator

Minnesota Oral Health Program

Minnesota Department of Health

651-201-5974

genelle.lamont@state.mn.us

health.state.mn.us/oralhealth

